

14 JANUARY 2025

REFERENCE: RFP-20-77MW-2025



1. Introduction

Instatoll Africa (Pty) Ltd invites qualified and experienced Engineering, Procurement, and Construction (EPC) contractors to submit proposals for the design, engineering, procurement, construction, and commissioning of a 20–77 MW solar farm located in the Moses Kotane Municipality, North-West Province, South Africa. InstaToll has secured a 126-hectare site in partnership with the Mokgatle Trust, with a Memorandum of Understanding (MOU) in place to transition into a long-term lease post-bankable feasibility. Pre-feasibility studies confirm the viability of the Project, with ongoing Environmental Impact Assessments (EIA) further validating potential success. The project aims to support our renewable energy goals by delivering sustainable and efficient energy solutions. The generated energy will serve energy traders, Eskom, municipalities, and large-scale energy consumers, thereby supporting our country's broader renewable energy and sustainability goals.

2. Project Overview

Project Name: InstaToll Mokgatle Trust 30MW Solar Farm

Project Location: Moses Kotane Municipality, North-West Province, South Africa

Client: Instatoll Africa (Pty) Ltd

InstaToll Africa (Pty) Ltd

Reg No 1963/002848/07

Directors: L Ngakane MB Tunyiswa NR Mboniswa LM Ndadana

371 Rivonia Boulevard, Edenburg, Sandton, 2128
Tel +27 10 109 2730 Email info@instatoll.co.za Web www.instatoll.co.za

Scope: Design, engineering, procurement, construction, and commissioning of a 30MW solar farm. The project includes the installation of all necessary infrastructure to connect the solar farm to the energy grid, ensuring compliance with South African energy regulations and sustainability standards.

Capacity: 30MW

Closing Date: 15 February 2025

3. Objective

The primary objective of this RFP is to solicit proposals from qualified EPC contractors who will deliver the following services:

- Design the solar farm to meet the project requirements.
- Procure all materials, equipment, and services necessary for the construction of the solar farm.
- Construct, test, and commission the solar farm, ensuring full compliance with local regulations, including grid connection and permitting requirements.

4. Scope of Work

The Contractor shall provide the following services and deliverables for the design, procurement, construction, and commissioning of a 30MW Solar Farm:

4.1 Design and Engineering

- **Site Layout & Electrical Schematics:** Develop detailed engineering designs for the solar farm, including site layout, electrical schematics, solar panel positioning, and equipment placement for PV arrays, inverters, battery storage (if applicable), and substations.
- **System Integration:** Design system integration with the existing power infrastructure, ensuring efficient and reliable energy transmission.
- **Regulatory Compliance:** Ensure compliance with local, provincial, and national regulations, standards, and best practices (including SANS and NERSA requirements).

4.2 Supply and Delivery:

- **Equipment Supply:** Provide all necessary components, including solar panels, inverters, mounting structures, transformers, monitoring systems, and any other required ancillary equipment.
- **Warranty:** Provide warranties for all equipment, covering defects, performance guarantees, and lifespan expectation

4.3 Installation:

- **Site Preparation & Civil Works:** Conduct all site preparation, including excavation, foundations, structural mounting systems, fencing, and housing for inverters and transformers.
- **Electrical Installation and Integration:** Install all electrical components, cabling, and grid-tied infrastructure to facilitate seamless energy transmission.
- **Monitoring & Control Systems:** Install monitoring, control, and safety systems to ensure optimal operation and security of the facility.

4.4 Commissioning:

- **System Testing:** Conduct comprehensive testing and commissioning of the entire system to ensure full functionality and grid compliance.
- **Training:** Provide hands-on training to InstaToll personnel on system operation, performance monitoring, and routine maintenance.
- **Documentation:** Deliver all as-built documentation, operation manuals, maintenance guides, and necessary certifications.

4.5 Post-Commissioning Support:

- **Warranty & Maintenance Services:** Offer warranty services, including repairs and replacements for defective components.
- **Service Level Agreement (SLA):** Provide a detailed SLA for ongoing maintenance, monitoring, and technical support, outlining response times and service deliverables.

5. Proposal Submission Requirements

Bidders are required to submit a comprehensive proposal addressing the following aspects:

5.1 Company Profile:

- **Company Overview:** Provide details of the company's history, structure, and experience in similar projects.
 - Demonstrate successful completion of at least three renewable energy projects or similar within the last five years.
- **Certifications and Qualifications:** A minimum **CIDB contractor grading designation of 8 EP or Equivalent** is mandatory.

5.2 Technical Proposal:

- **Project Approach:** Outline a detailed approach to project execution, including the design methodology.

- **Technology & Equipment:** Include proposed technology, equipment specifications, and integration with existing infrastructure.
- **Timeline:** Provide a comprehensive timeline and project schedule, indicating major milestones.

5.3 Financial Proposal:

- **Cost Breakdown:** Submit a detailed cost breakdown covering all aspects of the project, including:
 - Design, procurement, installation, and commissioning.
- **Payment Terms:** Clearly outline proposed payment terms and schedules.

5.4 Project Team:

- **Key Personnel:** Provide a list of key team members and their qualifications:
 - **ECSA-Registered Electrical/Design Engineer** with five years of renewable energy/electrical infrastructure experience.
 - **ECSA-Registered Structural Engineer or Technologist** with five years in structural construction projects.
 - **SACPCMP-Registered Construction Manager (Pr. CPM)** with five years of experience in renewable energy or electrical infrastructure.
 - **PMI-Registered Project Manager (Pr. PMP or equivalent)** with five years in project management within the renewable energy sector.
 - **Health, Safety and Environmental Manager** with a minimum of eight years of HSE management experience in large-scale energy or construction projects.
- **Subcontractors:** List any subcontractors or third-party partners involved in the project.

5.5 Past Projects:

- **References:** Provide three separate, unrelated, contactable references for projects completed within the last five years.
 - Each reference must be for a project where the contractor was responsible for the design, supply, installation, and commissioning of an energy generation plant.
 - Each project must have a minimum value of **R 10 million, incl. VAT** and include a signed **Certificate of Commissioning**.

5.6 Risk Management Plan:

- **Risk Identification & Mitigation:** Identify potential risks and propose comprehensive mitigation strategies.

5.7 Compliance and Certifications:

- **Regulatory Compliance:** Confirm compliance with all local laws, safety regulations, and relevant industry standards.
- **Team & Equipment Certifications:** Include relevant certifications for both the project team and equipment used.

Failure to address all required elements may result in disqualification. Proposals must be submitted by the **closing date** as specified in the RFP.

6. Evaluation Criteria

Proposals will be evaluated based on the following criteria:

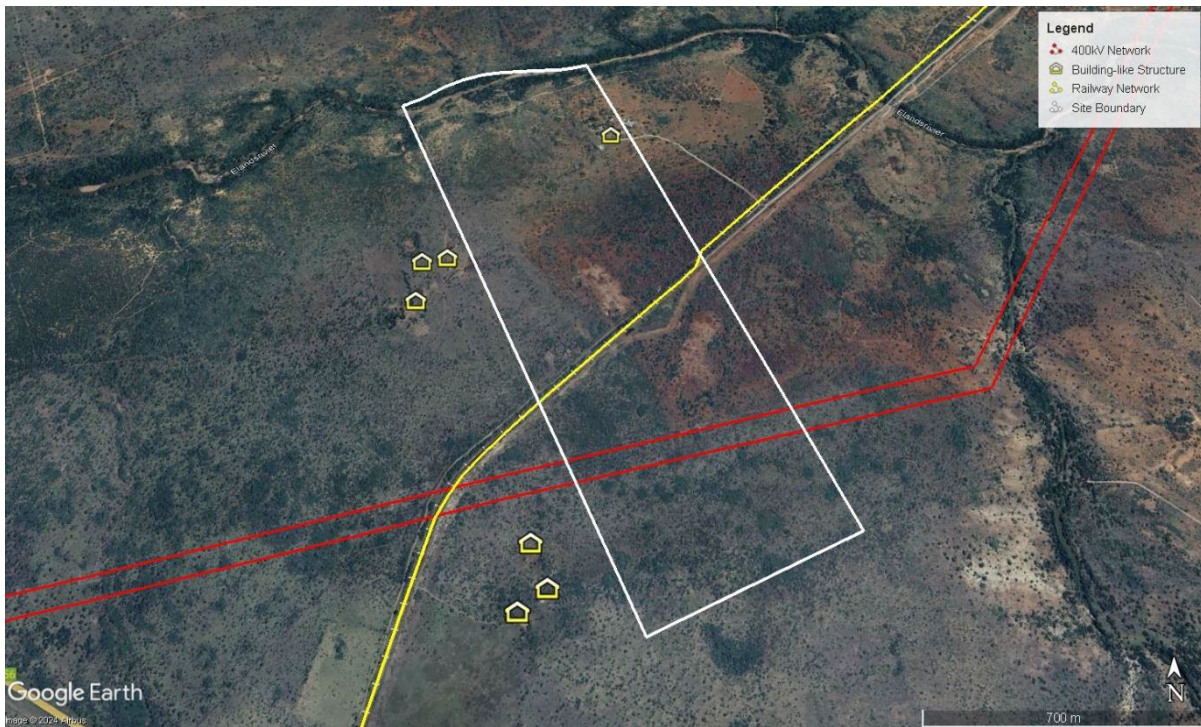
1. **Technical Merit (30%)**
 - Feasibility and innovation of the proposed solution.
 - Quality of the design and equipment offered.
2. **Experience and Qualifications (35%)**
 - Relevant experience of the contractor and project team in delivering similar projects.
3. **Cost (35%)**
 - Competitiveness of the financial proposal and overall value for money.
4. **Timeline (10%)**
 - Ability to meet the project's delivery timeline.

7. Proposal Submission Instructions

- **Submission Deadline:** 15 February 2025
- **Submission Format:** Proposals must be submitted electronically in PDF format.
- **Contact Person:** Bikile Makhubela 0760656002
- **Submission Email:** bmakhubela@instatoll.co.za

8. Site Information

Arrangements for site visit will be made upon request.



Refer to Appendix 1 (Pre-Feasibility Assessment)

9. Terms and Conditions

1. **Confidentiality:** All information disclosed in this RFP must be treated as confidential and used only for the purposes of preparing a proposal.
2. **Costs:** All costs associated with the preparation of the proposal shall be borne by the bidder.
3. **Right to Reject:** InstaToll reserves the right to reject any or all proposals without liability.
4. **Clarifications:** InstaToll may request clarification or further information from bidders during the evaluation process.

We look forward to receiving your proposal and working together to successfully deliver this project.